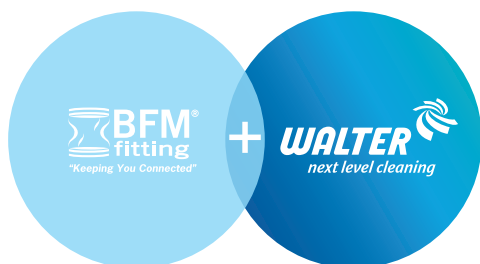


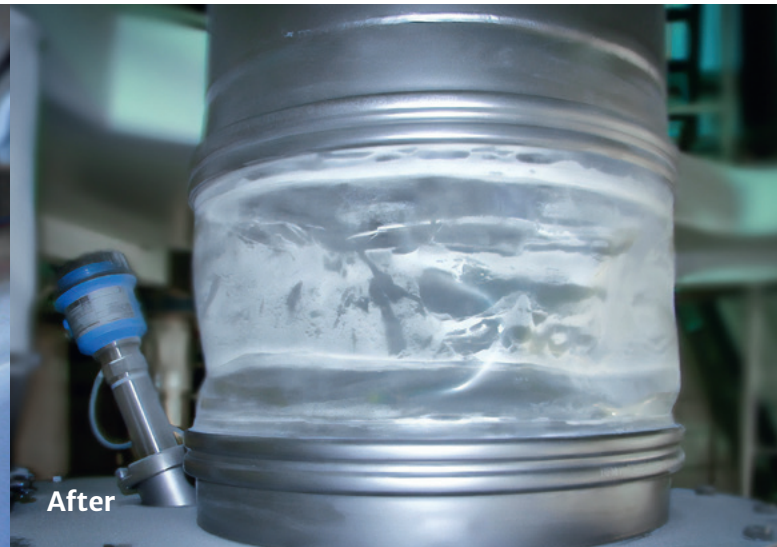
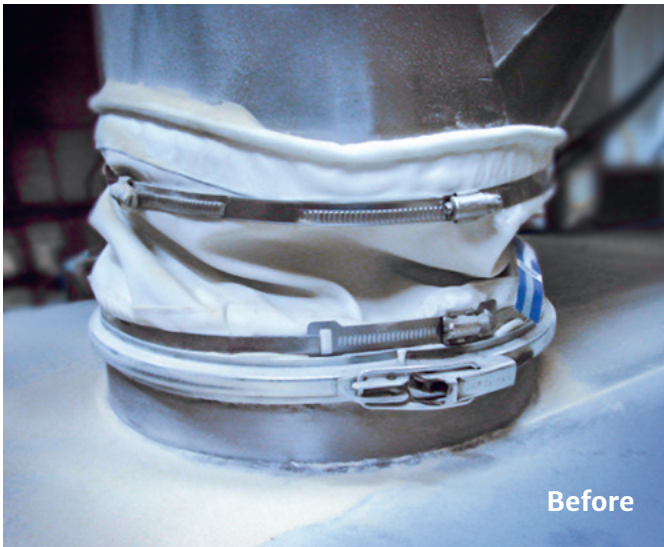
next level sealing

BFM[®] fittings



If the content remains
where it is supposed to be,
it is *next level sealing*





BFM[®] — your safe connection.

- / Installed within seconds
- / 100% dust tight
- / Longer run times
- / Perfect for WIP cleaning processes
- / Atex certified
- / Approved for food contact (EU 10/2011)

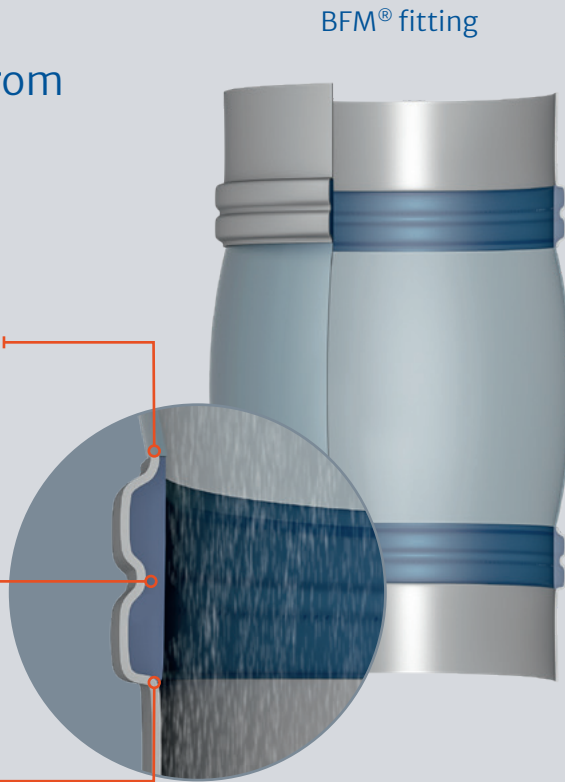
Advantages of the BFM® fitting

Seals the connection from the inside:

No friction between metal pipe and connector material

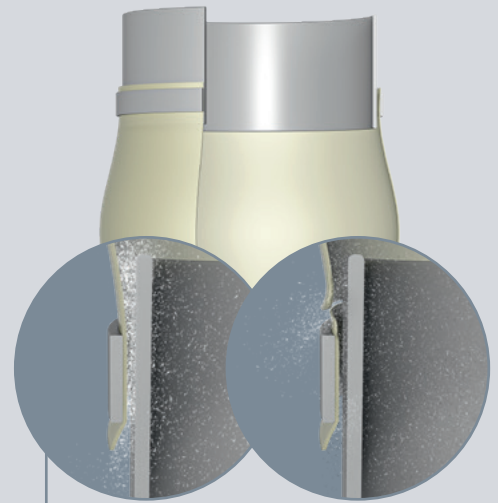
Pressure-proof – seals even better under pressure

Smooth on the inside – no pockets for product build-up



BFM® fitting

Hose-clamp connector



Usual problems of hose-clamp connectors are effectively avoided.

2 + 1 = safe connection

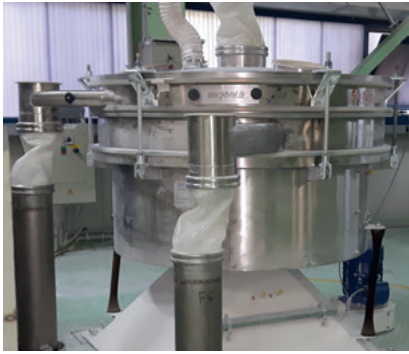


What is required? 2 BFM® spigots available in 1.4306 and 1.4404 stainless steel, 1 BFM® connector, available in a variety of materials for all applications.

Diameter:: Ø100 – 1650 mm (in 50 mm increments)

Connector length: 100 – 6000 mm (in 50 mm increments)

A world of applications



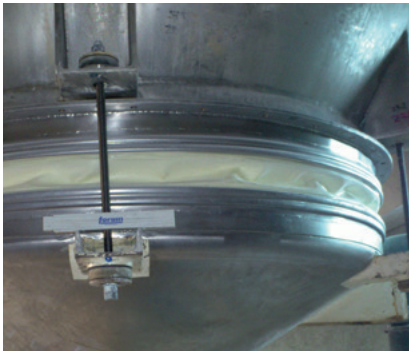
Sifters



CIP changeover



Container inlet



Silo outlet



Vibrational feeder



Dosing station



Bigbag station – outlet



Bigbag station – inlet

*safe
pressure-proof
flexible*

Special versions for individual requirements



Flexi-
connector



Support
rings



Blanking
caps



Tapered
shapes




Filter
bags



Tool Release
Smiley



Walter Gerätebau GmbH
Neue Heimat 16
74343 Sachsenheim-Ochsenbach / Germany
T +49 7046 980-0
F +49 7046 980-33
info@walter-cleaningsystems.com
www.walter-cleaningsystems.com

WALTER is the official German
distribution partner for 

The BFM fitting logo consists of a stylized blue and white icon of a pipe fitting, followed by the text "BFM" in a bold, blue, sans-serif font and "fitting" in a smaller, blue, lowercase sans-serif font below it.